

IT Infrastructure Management

With KCS next generation rack side console access solution, your local LCD console drawer and existing KVM gear can monitor access and control the full spectrum of serial console and network connected consoles. The KCS6000 thin client enables you to locally manage computers at the service processor level (IPMI, IBM-RSA, Dell-DRAC, HP-iLO, SUN-ALOM), operating level (VMWare) right up to the applications layers. You can also control all your other "headless" infrastructure using the USB control ports on your UPS power units, the serial consoles on your routers and firewalls, and the browser management ports on the other devices.



Your existing KVM equipment can now access all the IT assets in your data center.

Total Power Management

- > Manage all UPS systems and RPC connections from one appliance
- > 100% compatible with Eaton Powerware, MGE, and dozens more
- > Serial, USB and Network/SNMP connectivity for UPS and RPC
- > Simple Web Interface - Logging, Alerting, Monitoring, Real Time Graphing
- > Drop in solution - Manage competitors equipment at existing installs

Environmental Monitoring

- > Manage Environmental Sensors from a single appliance and web console
- > Logging, alerts and graphing for disaster recovery and audit trail
- > Manage temperature, humidity, door contacts, water, smoke, vibration
- > 100% compatible with Eaton environmental sensors and monitoring probes



Finalist 2008
"Best Management Tool"



Environmental Monitoring Device with two inputs for external sensors

- Access via Internet
- Dial in Out of Band
- Automatic Failover

Product Snapshot:

- Built-in Thin Client
- 4 or 16 Serial Ports
- 1 Ethernet Interface
- 4 High Speed USB
- 1 DB-15 VGA
- 2 PS2 keyboard & mouse
- Clustering 1000 Per IP
- Programmable Linux
- PowerMan & NUT
- IPMI Server Reboot
- Manage Service Processors
- Pattern Match Alerting
- Nagios Checks

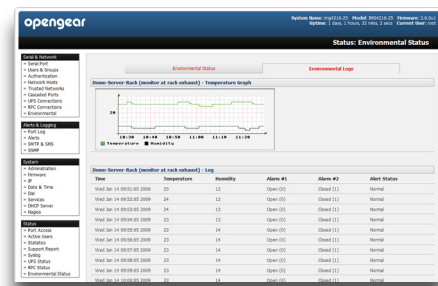
Benefits

- > Consolidate management of hundreds of UPS systems using a single IP connection
- > Slash costs by reducing or eliminating SNMP management cards
- > No management software to install on dedicated server computer
- > Simple browser and terminal access with strong authentication and encryption
- > Ensure Uptime, Emergency Out of Band access via broadband or dial up
- > One solution for IT management, Environmental Monitoring and Power Management

Embedded with Network UPS Tools



Simple Browser Interface



Security and Authentication

- Secure Shell (SSH V2)
- AAA TACACS+, RADIUS and LDAP authentication
- PAP/CHAP authentication (dial up)
- Per port user access lists and dial back support
- Local authentication
- System event Syslog
- SSH port and IP forwarding support, IP aliasing
- IP packet filtering, IPV6

Serial Console Port Management

- Windows 2003 Server EMS support
- SUN / Solaris ready (no inadvertent breaks)
- Break over SSH support
- Port monitoring, triggers and alarms
- Offline data logging (Syslog, NFS, CIFS)
- Online data buffering
- Multiple users per port (with port sniffing)
- Telnet/SSH/Raw/RFC2217 TCP connect
- Clustering up to 1000 ports per IP

Tunneled LAN Port Management

- Secure SSH tunneling and NAT port redirection
- Secure RDP/VNC/X access to Windows /Linux/Sun
- Secure HTTP/HTTPS to browser controlled appliances
- Secure Telnet /SSH access
- Service processor access (IPMI, ILO, LOM, RSA)
- Extensible to support custom services /ports
- Configurable point-n-click SDTConnector client
- User access limited by host, and by SDT service
- Unlimited number of LAN computers/appliances
- Unlimited number of connections per SSH session

Power Management

- Embedded Network UPS Tools & PowerMan
- UPS/RPC monitoring, graphing, alarms
- Connect Serial and USB connected UPS/RPC

KCS6000 System Management

- KVM Interface Internal Thin Client
- Secure Web management (HTTP, HTTPS)
- Store config on removable USB Flash
- Command Line interface (Linux Shell)
- ARP-PING (IP assignment)
- SNMP, SMS, and email alerts

Other Protocols Supported

- DHCP for dynamic IP assignment
- NTP for time synchronization
- PPP for dial up access
- NAT port redirection
- RFC2217- Port Redirection
- Network UPS Tools

Upgrades

- Flash upgradeable - free from online FTP site
- FTP, TFTP client for file transfer



Models:

- KCS6104** 4 RJ-45 RS-232 serial ports (2400 to 230,400bps)
- KCS6116** 16 RJ-45 RS-232 serial ports (2400 to 230,400bps)
- 1 DB-9 RS-232 console / modem serial port (2400 to 115,200 bps)
- 1 RJ-45 10/100 ethernet port
- 1 DB-15 VGA
- 2 PS2 keyboard & mouse
- 1 MIC output / audio input
- 4 high speed USB

Cables Included

- 2 RJ-45 CAT5 cables (6 ft)
- 2 RJ-45 to DB-9 adapters (straight & cross-over)

Environmental

Ambient operating: 5°C to 50°C (41°F to 122°F)
 Storage: -30°C to +60°C (-20°F to +140°F)
 Humidity: 5% to 90%

Regulatory

FCC Part 15 A UL 1950 CE (EN55022 A, EN55024, EN60950)
 TUV C-Tick RoHS compliant

Power, Size & Weight

Internal universal 100-240V AC, or
 Internal +/- 36V to 72V DC
 Power consumption less than 10W
 17 x 6.7 x 1.75 in 44 x 17 x 4.5 cm
 1RU with rack mounts

CPU/Memory

AMD Geode LX800 500MH
 256MB DDR
 1GB Compact Flash
 4MB Award BIOS



USA	UK	EU	KVM	USB Ports	RS-232	10/100	Warranty
KCS6104-AC-US	KCS6104-AC-UK	KCS6104-AC-EU	1	4	4	1	4 Years
KCS6104-DC	KCS6104-DC	KCS6104-DC	1	4	16	1	4 years
KCS6116-AC-US	KCS6116-AC-UK	KCS6116-AC-EU	1	4	4	1	4 Years
KCS6116-DC	KCS6116-DC	KCS6116-DC	1	4	16	1	4 years