

IT Infrastructure Management

- > Advanced IT Management, monitoring, alerting, offline logs, out of band access
- > Manage servers, switches, routers, firewalls, SAN with serial console ports
- > Access blade servers via IPMI or lights out cards over secure management LAN
- > Programmable Linux for easy scripting, perfect for Cloud and Grid computing
- > No software to load on host, complete package for total IT Management

Total Power Management

- > Manage all UPS systems and RPC connections from one appliance
- > 100% compatible with Eaton Powerware, MGE, and dozens more
- > Serial and Network/SNMP connectivity for UPS and RPC
- > Simple Web Interface - Logging, Alerting, Monitoring, Real Time Graphing
- > Drop in solution - Manage competitors equipment at existing installs

Environmental Monitoring

- > Manage Environmental Sensors from a single appliance and web console
- > Logging, alerts and graphing for disaster recovery and audit trail
- > Manage temperature, humidity, door contacts, water, smoke, vibration
- > 100% compatible with Eaton environmental sensors and monitoring probes



“Knowing I don't have to drive to the datacenter to reboot a machine gives me a warm fuzzy feeling”



Finalist 2008
“Best Management Tool”



Environmental Monitoring Device with two inputs for external sensors



- Access via Internet
- Dial in Out of Band
- Automatic Failover

Product Snapshot:

- 1, 8, 16, 48 Serial Ports
- 10/100 Ethernet Interface
- AC or DC Power
- Clustering 1000 Per IP
- Programmable Linux
- PowerMan
- Network UPS Tools
- IPMI Server Reboot
- Manage Service Processors
- Pattern Match Alerting
- Nagios Checks

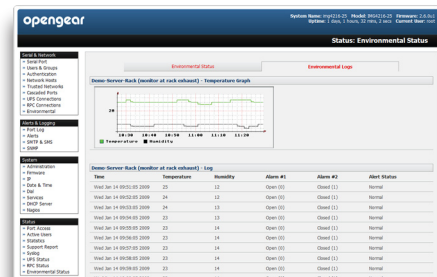
CM4000 Benefits

- > Consolidate management of hundreds of UPS systems using a single IP connection
- > Slash costs by reducing or eliminating SNMP management cards
- > No management software to install on dedicated server computer
- > Simple browser and terminal access with strong authentication and encryption
- > Ensure Uptime, Emergency Out of Band access via broadband or external modem
- > One solution for IT management, Environmental Monitoring and Power Management

Embedded with Network UPS Tools



Simple Browser Interface



Security and Authentication

- Secure Shell SSH V2
- AAA TACACS+, RADIUS and LDAP authentication
- PAP/CHAP authentication (dial up)
- Per port user access lists and dial back support
- Local authentication
- SSH port and IP forwarding support, IP aliasing
- IP packet filtering, IPV6

Serial Console Port Management

- Windows 2003 Server EMS support
- SUN / Solaris ready (no inadvertent breaks)
- Break over SSH support
- Port monitoring, triggers and alarms
- Offline data logging (Syslog, NFS, CIFS)
- Online data buffering
- Multiple users per port (with port sniffing)
- Telnet/SSH/Raw/RFC2217 TCP connect
- Clustering up to 1000 ports per IP

Tunneled LAN Port Management

- Secure SSH tunneling and NAT port redirection
- Secure RDP/VNC/X access to Windows /Linux/Sun
- Secure HTTP/HTTPS to browser controlled appliances
- Service processor access (IPMI, ILO, LOM, RSA)
- Extensible to support custom services /ports
- Configurable point-n-click SDTConnector client
- User access limited by host, and by SDT service
- Unlimited number of LAN computers/appliances
- Unlimited number of connections per SSH session

Power Management*

- Embedded Network UPS Tools
- Embedded PowerMan
- UPS/RPC monitoring, graphing, alarms

CM4000 System Management

- Secure Web management (HTTP, HTTPS)
- Command Line interface (Linux Shell)
- ARP-PING (IP assignment)
- SNMP, SMS, and email alerts

Other Protocols Supported

- DHCP for dynamic IP assignment
- NTP for time synchronization
- PPP for dial up access
- NAT port redirection
- RFC2217- Port Redirection

Upgrades

- Flash upgradeable - free from online FTP site
- FTP, TFTP client for file transfer



Models

- CM4001: 1 DB9 RS-232 serial port (2400 to 230,400bps)
- CM4008: 8 RJ-45 RS-232 serial ports (2400 to 230,400bps)
- CM4116: 16 RJ-45 RS-232 serial ports (2400 to 230,400bps)
- CM4148: 48 RJ-45 RS-232 serial ports (2400 to 230,400bps)
- 1 DB-9 RS-232 local / modem port (2400 to 115,200 bps)
- 1 RJ-45 10/100Base-T Ethernet port

Cables

- 2 RJ-45 CAT5 cables (6 ft)
- 2 RJ-45 to DB-9 adapters (straight & cross-over)

Power

CM4001/CM4008: External; CM4116/CM4248: Internal
 100-240V AC, 50/60 Hz, CM41xx-48V: External +/- 48VDC
 Power consumption less than 20W

Dimensions & Weight

- CM4001: 4.1 x 3.3 x 1.2 in (10.8 x 8 x 3.2 cm) 2.5 lb
- CM4008: 8.2 x 4.9 x 1.2 in (20.8 x 12.6 x 4.5 cm) 3.7 lb
- CM4116/4148: 17 x 8.5 x 1.75 in (43.2 x 21. x 4.5 cm) 8.5 lb

Environmental

Ambient operating temperature: 5°C to 50°C (41°F to 122°F)
 Non operating storage temp.: -30°C to +60°C (-20°F to 140°F)
 Humidity 5% to 90%

MTBF

- CM4001/4008: 50,000 hrs
- CM4116/4148: 200,000 hrs

Regulatory

FCC Part 15 A UL 1950 TUV C-Tick
 CE (EN55022 A, EN55024, EN60950) ROHS

CPU

166MHz ARM-based System on Chip (Micrel KS8695P)

Memory

- CM4001 & CM4008: 16MB SDRAM 8MB Flash
- CM4116 & CM4148: 64MB SDRAM 16MB Flash

***Power Management Available only on CM4116 & CM4118**



USA	UK	EU	Serial Ports	AC Power	DC Power	Warranty
CM4001-US	CM4001-UK	CM4001-EU	1	◆		1 Year
CM4008-SAC-US	CM4008-SAC-UK	CM4008-SAC-EU	8	◆		1 Year
CM4116-SAC-US	CM4116-SAC-UK	CM4116-SAC-EU	16	◆		4 Years
CM4116-SDC	CM4116-SDC	CM4116-SDC	16		◆	4 Years
CM4148-SAC-US	CM4148-SAC-UK	CM4148-SAC-EU	48	◆		4 Years
CM4148-SDC	CM4148-SDC	CM4148-SDC	48		◆	4 Years